

PRESCRIBED GRAZING  
ON THE  
MOORE –WEBB – HOLMES  
PLANTATION

**CHARLES HOLMES**

PRODUCER  
MARION, ALABAMA

# HOLMESTEAD COMPANY



**Holmes Family**

**6 Generations Since 1819**

# FAMILY HISTORY

- THE OLDER GENERATIONS
- THE YEARS 1972- 1998
- THE YEARS 1998-present

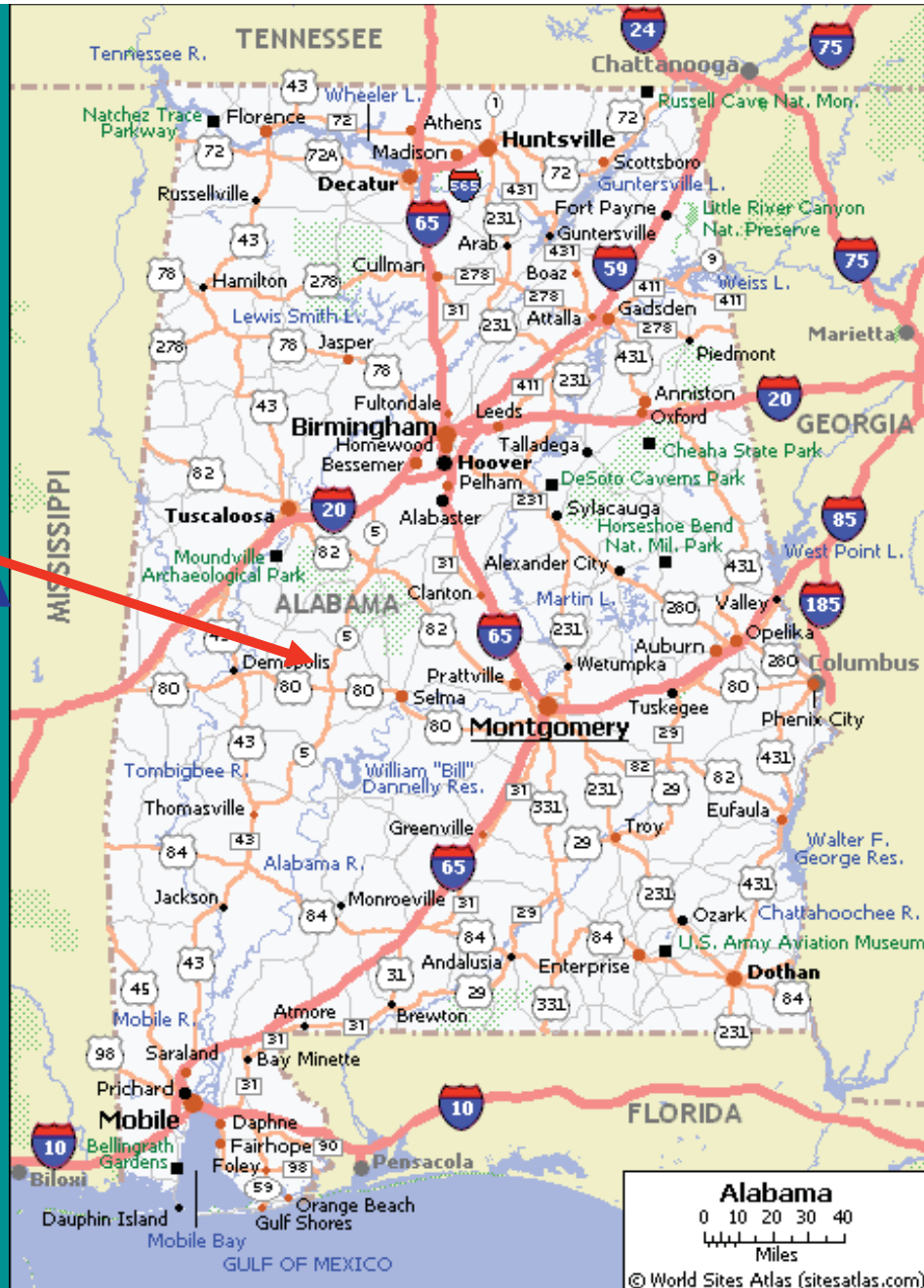
“The idea of using the land according to its capability and treating the land according to its needs.”

**Hugh Bennett**

# STATE OF ALABAMA



MARION,  
ALABAMA



# What Promoted Interest in Prescribed Grazing

Good Conservation Practice

Economics

Time

NRCS Grazing Specialist

NACD Grazing Committee



**STEERS ON FESCUE**



**COW / CALF PAIRS**

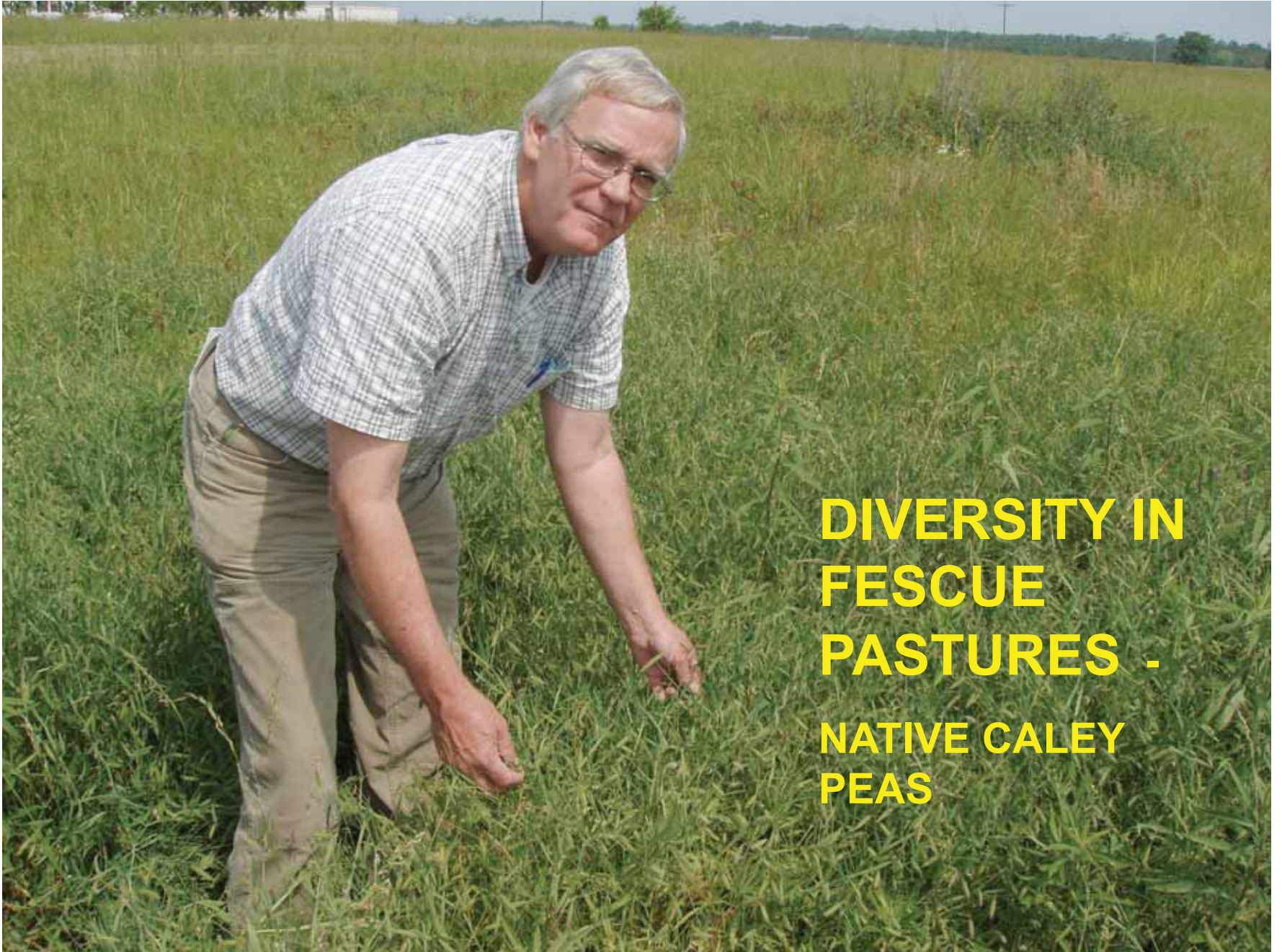


# Farm Activities

- **6000 Acres**
  - **2000 Pasture land**
    - Bermudagrass
    - Dallisgrass
    - Fescue
    - Eastern Gamma Grass (Native)
    - Switch Grass (Native)
  - **4000 Timber**
    - Loblolly Pine
    - Longleaf Pine
    - Mixed Pine and Hardwood



# FESCUE PASTURES



**DIVERSITY IN  
FESCUE  
PASTURES -  
NATIVE CALEY  
PEAS**



**NATIVE PLANTS VOLUNTEER  
AFTER PRESCRIBED BURNING—  
EASTERN GAMAGRASS, LITTLE AND BIG BLUESTEM,  
PARTRIDGE PEA, AND BLACKEBERRY**



**VOLUNTEER STANDS OF  
EASTERN GAMAGRASS**

# PRACTICES NEEDED FOR PRESCRIBED GRAZING

- Fencing
- Water Facilities
- Grazing Resources
- Hay Resources



**CROSS FENCING**

**3 STRANDS HIGH TENSILE POWER**

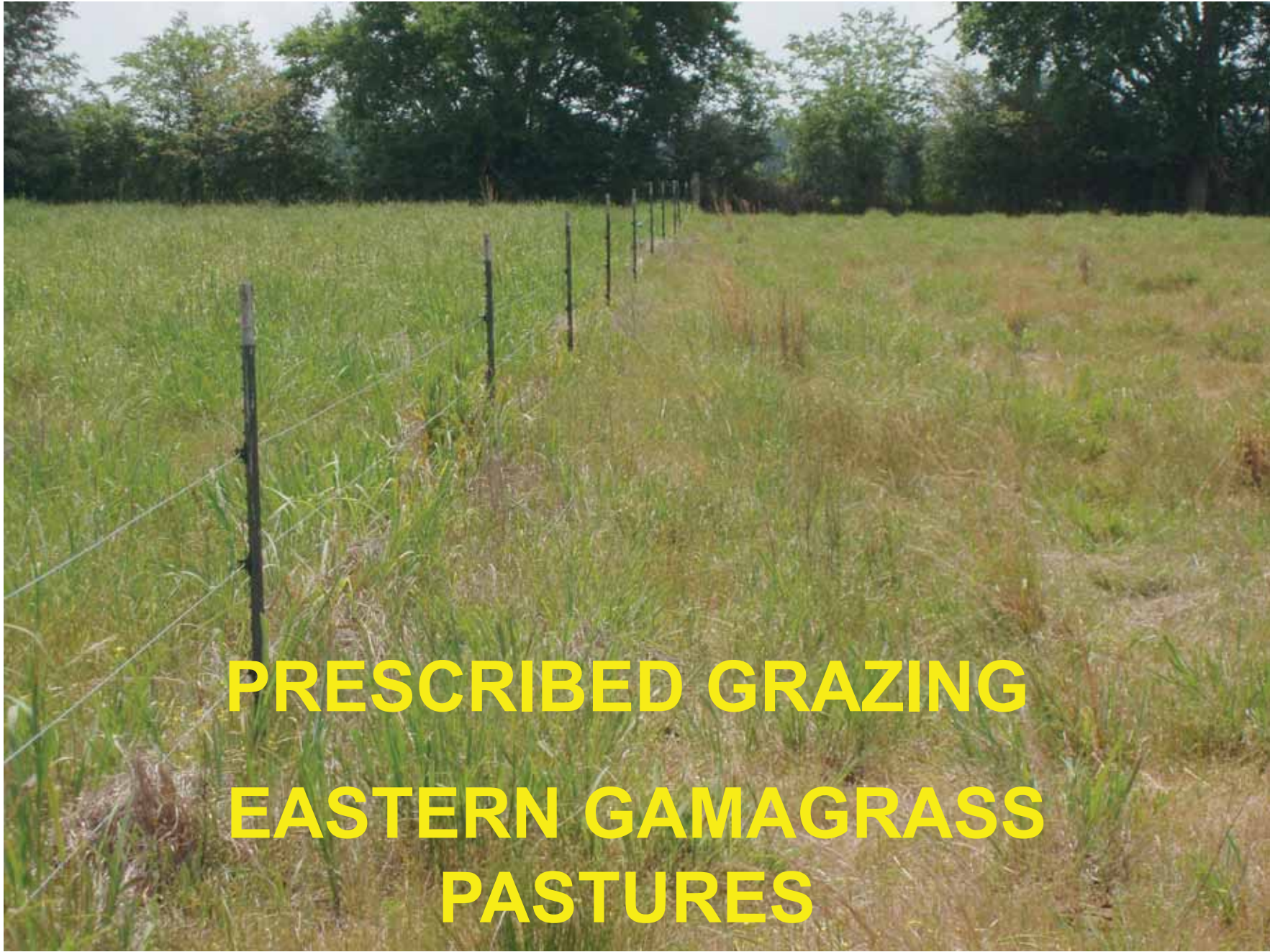


**EXISTING WATER TROUGHS**

**ADAPTED FOR  
PRESCRIBED GRAZING**



**INSTALLING PIPELINE FOR NEW WATERING FACILITIES**



**PRESCRIBED GRAZING  
EASTERN GAMAGRASS  
PASTURES**

# PRACTICES IMPLEMENTED

- Fence 87,268 feet
- Water Line 20,926 feet
- Grass Planting 515 acres

**TOTAL LAND TREATMENT**

**1090 ACRES**

# GRAZING SYSTEM

- PASTURES DIVIDED  
8-20 ACRE PADDOCKS
- STOCKING - 14 CONSECUTIVE DAYS
- ROTATION BASED ON  
FORAGE HEIGHTS
- PASTURES REST 88%
- FORAGE UTILIZATION 65%

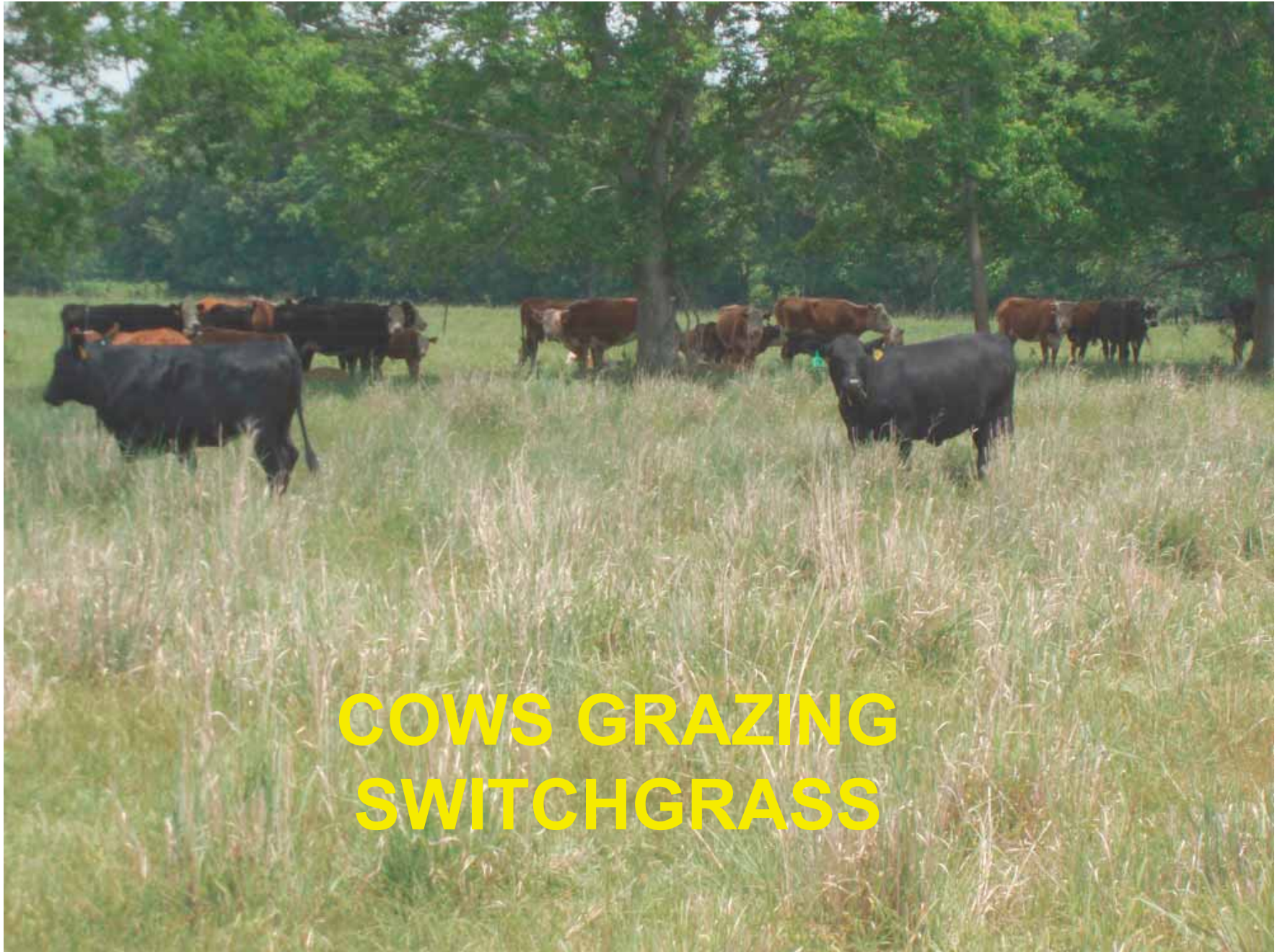
## **NATIVE WARM SEASON GRASSES**

- **EASTERN GAMAGRASS**  
BEGIN GRAZING AT 24”  
STOP GRAZING AT 12”
- **ALAMO SWITCHGRASS**  
START GRAZING AT 18”  
STOP GRAZING AT 10”

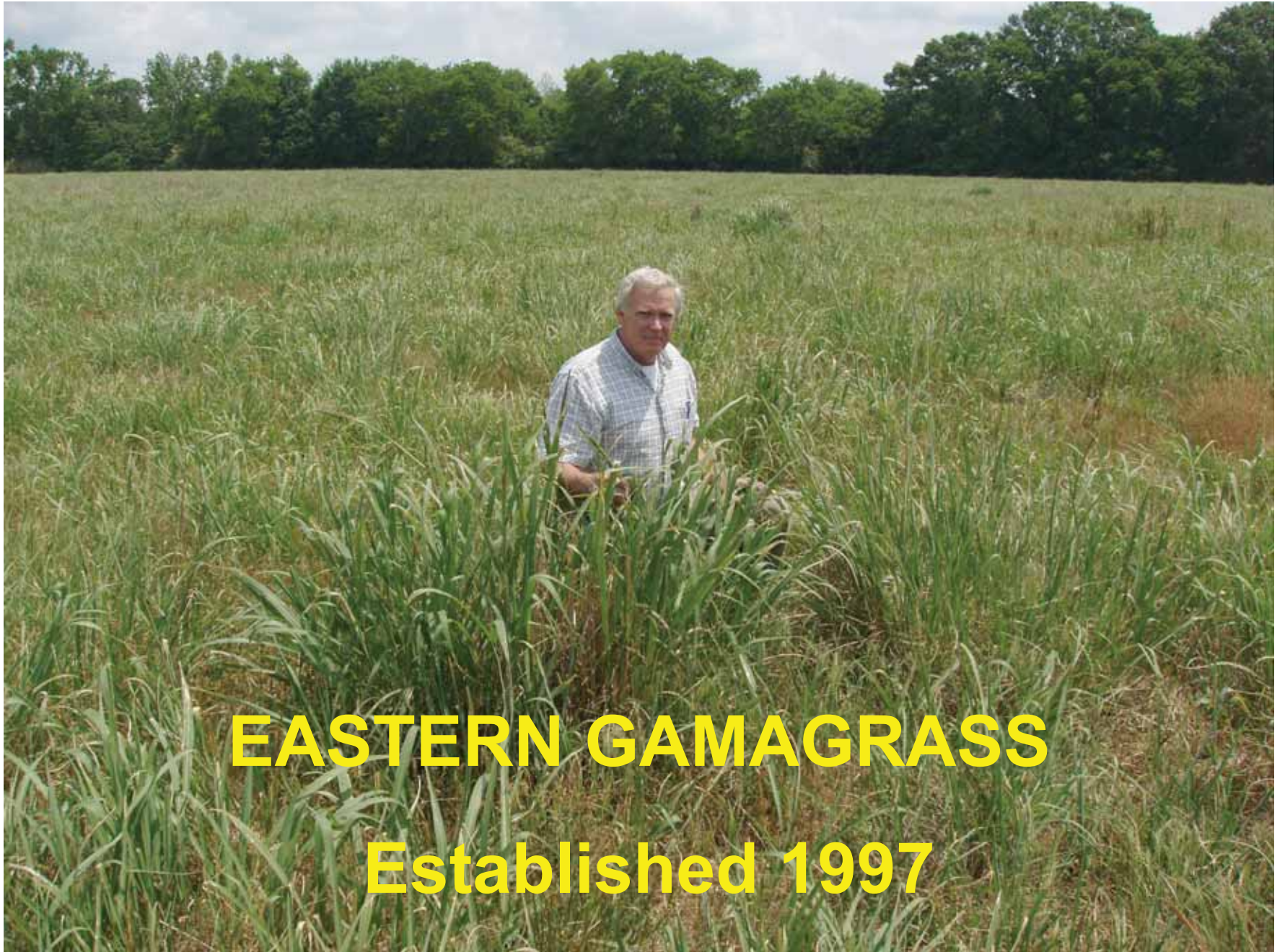


**SWITCHGRASS PASTURE**

**Established 1997**



**COWS GRAZING  
SWITCHGRASS**



**EASTERN GAMAGRASS**

**Established 1997**



**PRESCRIBED GRAZED**

**EASTERN GAMAGRASS PASTURE**



**PRESCRIBED GRAZING  
PROMOTES UNIFORM  
ANIMAL WASTE DISTRIBUTION**

# **PRESCRIBED GRAZING BENEFITS**

- **GREATER LIVESTOCK YIELDS**
- **INCREASE FORAGE PRODUCTION**
- **HAY NEEDS REDUCED**
- **IMPROVE LIVESTOCK HANDLING**
- **IMPROVED WEED MANAGEMENT**

A large herd of cattle, including brown, black, and white cows, is gathered in a grassy field. The background features a line of trees under a bright blue sky with scattered white clouds. The text "BUILD IT....." is overlaid in the upper portion of the image.

**BUILD IT.....**

**AND THEY WILL COME !**

